



# Request For Proposals to Lease Swans Market

## Space Available

1. 942 Clay Street ( $\pm$ 950 sq. ft.)
2. 546 9<sup>th</sup> Street ( $\pm$ 1,891 sq. ft.)
3. 921 Washington Street ( $\pm$ 3,233 sf)



**EAST BAY ASIAN LOCAL  
DEVELOPMENT CORPORATION**

BUILDING HEALTHY, VIBRANT AND SAFE NEIGHBORHOODS

**Carolyn Johnson (CJ)**

Director of Commercial Real Estate

CADRE#: 01252240/00990167

[commercialleasing@ebaldc.org](mailto:commercialleasing@ebaldc.org)



# Overview

---

The original Swan's Marketplace opened in 1917 and served as downtown Oakland's premier market until its closure in 1983.

Swan's Market was acquired by the [East Bay Asian Local Development Corporation \(EBALDC\)](#) in 1998 and our historic restoration was completed in 2000. EBALDC's award-winning redevelopment provided affordable rental housing, market rate "cohousing" condominiums and commercial space for a variety of businesses.

Today, Swan's Market is a popular destination in Oakland and is home to some of the City's most popular restaurants.

We are seeking proposals to lease space at this historic Market. To discuss this opportunity and schedule a tour, please contact us to discuss our requirements:

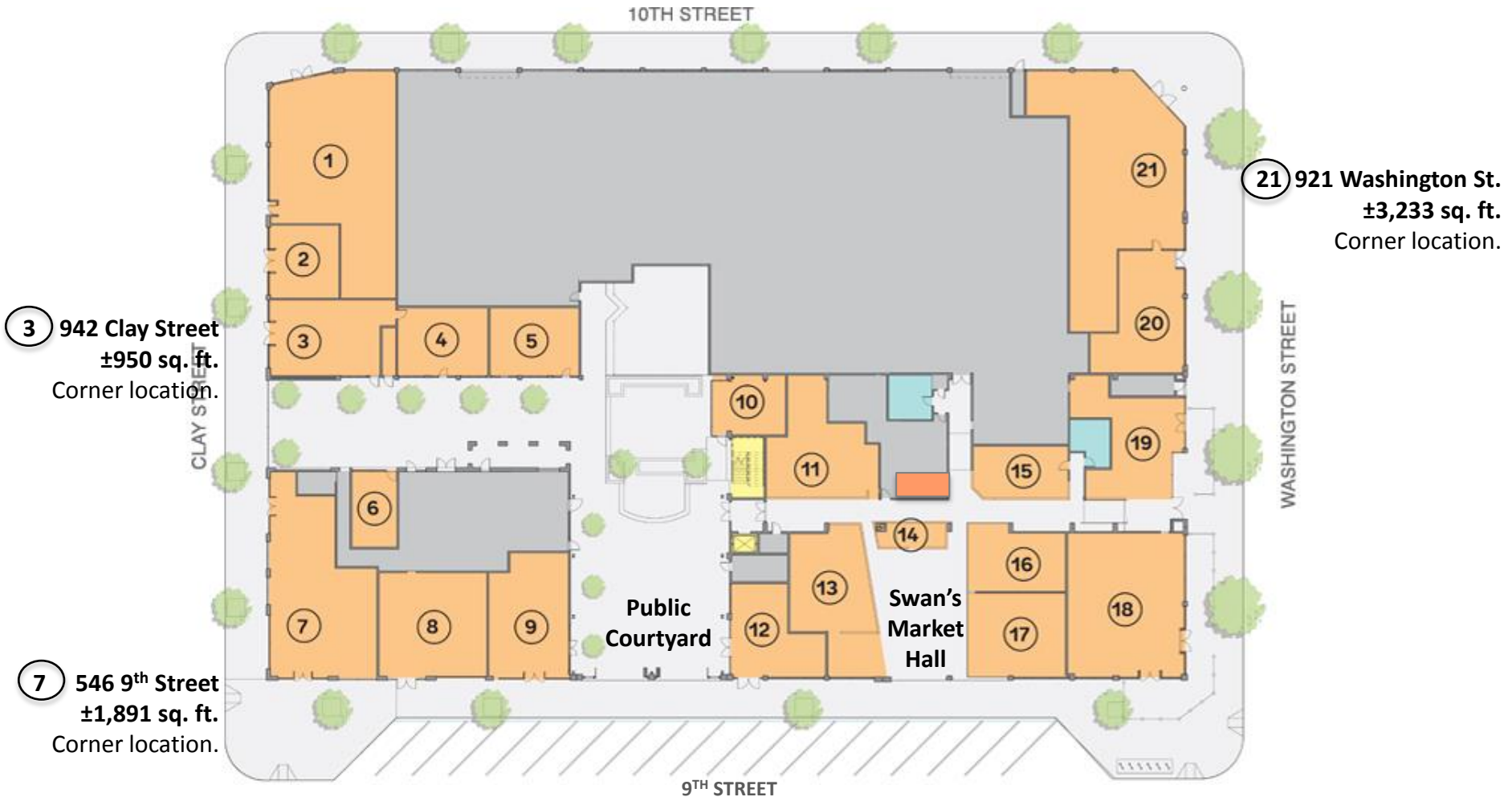
[commercialleasing@ebaldc.org](mailto:commercialleasing@ebaldc.org)



EAST BAY ASIAN LOCAL  
DEVELOPMENT CORPORATION



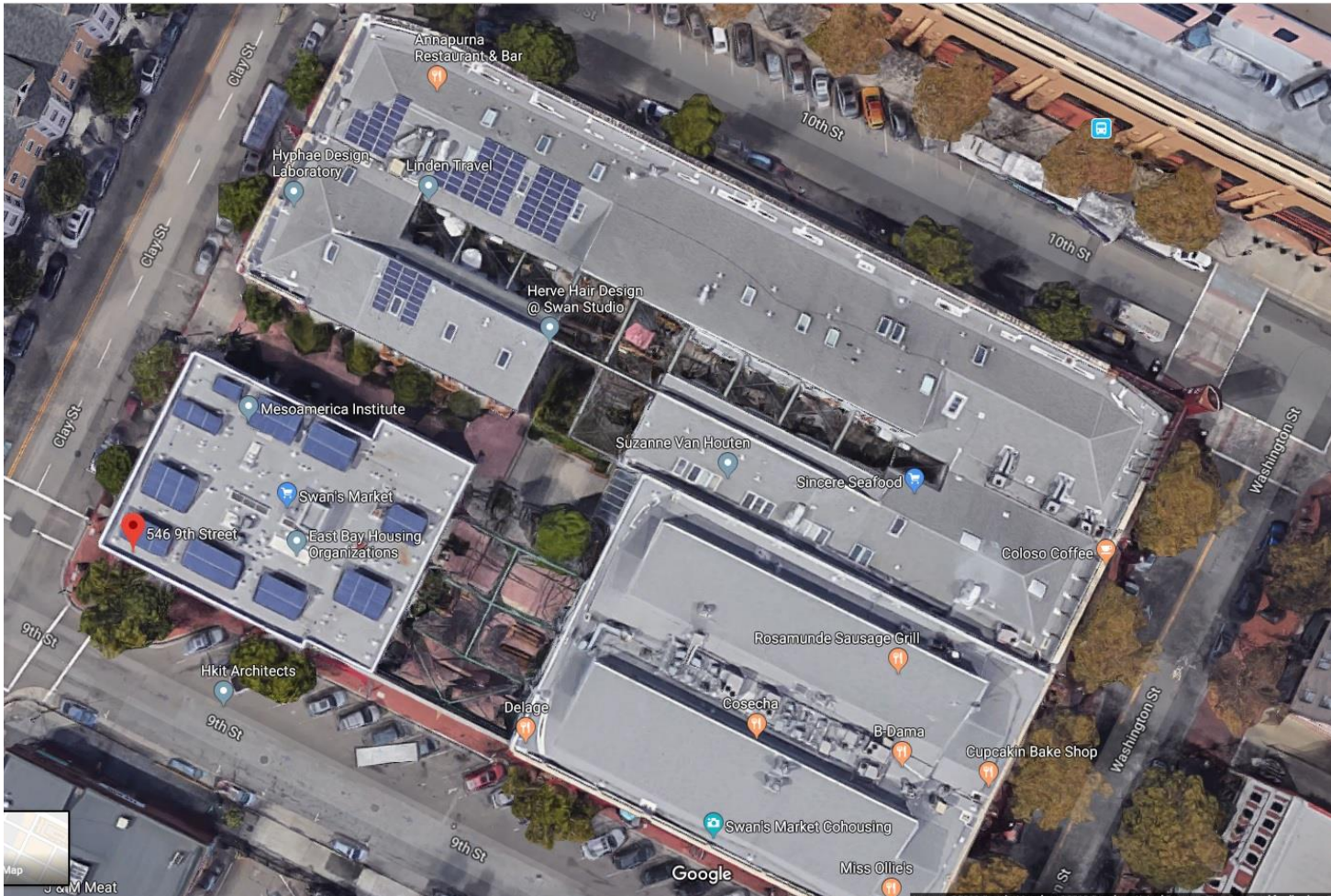
# Site



EAST BAY ASIAN LOCAL  
DEVELOPMENT CORPORATION



# Nearby Amenities



EAST BAY ASIAN LOCAL  
DEVELOPMENT CORPORATION