



## EAST BAY ASIAN LOCAL DEVELOPMENT CORPORATION

### Call for Proposals: Interior Artwork

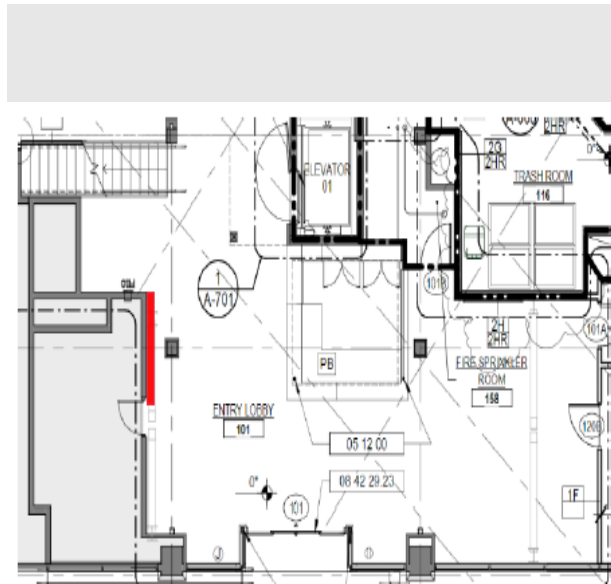
#### About Us:

EBALDC is a non-profit community development organization with over 40 years of experience in building healthy, vibrant and safe neighborhoods in Oakland and East Bay.

Originally built in 1907 in Oakland's original Chinatown, the San Pablo Hotel building was operated as a commercial hotel. It is currently a senior residential community with Centers for Elders Independence providing services on the ground floor. The project is currently finishing up a major renovation, that included major interior renovation of the lobby and shared spaces.

#### Scope of Work:

We are currently seeking custom artwork, designed and installed by an Oakland artist for the lobby of the San Pablo Hotel. The piece will be located just inside the lobby entrance on a painted white, north-facing interior wall, approx. 15' wide by 20' tall with an unusual shape due to steel structural elements.



Important artwork themes we are looking for in this proposal are:

- Weaving local history to the modern day, including history of this building
- Community & resident leadership
- Social justice

*Our maximum budget for design, fabrication, and installation of all artwork is \$4700*

### **OPTION 1 – Your Custom Artwork**

Provide a proposal for artwork for this high-visibility space. If you are proposing to install your existing works for this space, please provide photos or links. If you plan to produce new work custom to this space, provide a written description of the artwork including size, medium, how it ties to the desired themes, and a timeline for creation/ installation along with links to your portfolio of similar artwork.

Describe how the piece(s) will be installed or secured, including structural and ADA requirements maintenance and security considerations for this public and high-traffic space.

### **OPTION 2 – Sign Fabrication**

Provide custom carpentry and installation services to create a wall-hung lenticular wall hanging, inspired by the image below. Size and design is flexible based on artist’s proposal.

Material to be wood, with matte wall vinyl showing two digitally printed images of the building in modern and historic eras. Photographs can be provided by EBALDC.



### **ARTIST BIDDING & INSTALLATION SCHEDULE**

- By 9/16: RFP released
- By 9/30 at 5pm: RFP submissions are due
- Week of 10/5: Follow up discussions with finalists as needed
- By 10/9: Winning artist is selected and notified
- By 10/23: Artist contract signed
- By 11/9: Artist installs work on-site

### **SUBMISSION**

Submit your proposal with your proposed designs (or work sample and description of artistic process), timeline, and itemized costs including installation to Annie Ledbury [aledbury@ebaldc.org](mailto:aledbury@ebaldc.org) by 9/30 at 5pm for consideration.